



Government of India
Ministry of Earth Sciences



India Meteorological Department

PRESS RELEASE-1

Time of issue: 1530 hours IST

Dated: 15th November, 2023

Sub: Depression over westcentral Bay of Bengal

Under the influence of an upper air cyclonic circulation over South Andaman Sea, a low pressure area formed over southeast Bay of Bengal (BoB) and adjoining Andaman & Nicobar Islands in the morning (0530 hours IST) of yesterday, the 14th November. It lay as a well marked low pressure area over southeast & adjoining central BoB in the same evening (1730 hours IST). It concentrated into a depression over westcentral BoB in the forenoon (0830 hours IST) of today, the 15th November, 2023. It moved northwestwards with a speed of 13 kmph during past 3 hours and lay centred at 1130 hours IST of today, the 15th November over the same region near latitude 14.7°N and longitude 86.5°E, about 470 km southeast of Visakhapatnam (Andhra Pradesh), 620 km south-southeast of Paradip (Odisha) and 770 km south of Digha (West Bengal).

It is likely to move initially northwestwards, then north-northwestwards and intensify into a deep depression over Westcentral Bay of Bengal off Andhra Pradesh coast in the morning of 16th November. Thereafter, it would recurve north-northeastwards and reach over Northwest Bay of Bengal off Odisha coast on 17th morning & off North Odisha-West Bengal coasts on 18th November morning.

Forecast track and intensity are given below:

Date/Time (IST)	Position (Lat. °N/ long. °E)	Maximum sustained surface wind speed (Kmph)	Category of cyclonic disturbance
15.11.23/1130	14.7/86.5	40-50 kmph gusting to 60 kmph	Depression
15.11.23/2330	15.6/85.7	45-55 kmph gusting to 65 kmph	Depression
16.11.23/1130	17.0/85.8	50-60 kmph gusting to 70 kmph	Deep Depression
16.11.23/2330	18.3/86.5	50-60 kmph gusting to 70 kmph	Deep Depression
17.11.23/1130	19.3/87.1	50-60 kmph gusting to 70 kmph	Deep Depression
17.11.23/2330	20.3/87.8	50-60 kmph gusting to 70 kmph	Deep Depression
18.11.23/1130	21.3/88.5	45-55 kmph gusting to 65 kmph	Depression

Warnings:

(i) Rainfall Warning (graphics enclosed):

- Light to moderate rainfall at many places with isolated heavy to very heavy rainfall is very likely over coastal districts of Tamil Nadu & Puducherry on 15th November.
- Light to moderate rainfall at many places with isolated heavy rainfall is likely over coastal districts of Andhra Pradesh on 15th November
- Light to moderate rainfall at a few places is likely over coastal districts of Odisha & West Bengal on 15th November. It would increase becoming light to moderate rainfall at many

Contact: Cyclone Warning Division, Office of the Director General of Meteorology,
India Meteorological Department, Ministry of Earth Sciences.

Phone: (91) 11-24652484, FAX: (91) 11-24643128, 24623220, E-mail: cwdhq2008@gmail.com, Website: rsmcnewdelhi.imd.gov.in

Spatial rainfall distribution: Isolated: <25%, A few: 26-50%, Many: 51-75%, Most: 76-100%

Rainfall amount (mm): Heavy rain: 64.5 – 115.5, Very heavy rain: 115.6 – 204.4, Extremely heavy rain: 204.5 or more.

places with isolated heavy rainfall is likely on 16th and isolated very heavy rainfall on 17th November over coastal districts of Odisha & West Bengal.

- Light to moderate rainfall at many places with isolated heavy rainfall is likely over Nagaland, Manipur, Mizoram & Tripura during 16th to 18th November and over south Assam and east Meghalaya on 17th November

(ii) Wind warning (graphics enclosed):

- **Squally weather** with wind speed reaching **35-45 kmph gusting to 55 kmph** is likely to prevail over southwest Bay of Bengal along & off Tamil Nadu & Puducherry and Sri Lanka coasts on 15th & 16th November.
- **Squally wind** speed reaching **45-55 kmph gusting to 65 kmph** is likely over westcentral and adjoining south Bay of Bengal on 15th November and likely to become **50-60 kmph gusting to 70 kmph** over westcentral Bay of Bengal on 16th November and over northwest and adjoining westcentral Bay of Bengal on 17th November.
- **Along & off Andhra Pradesh Coast: Squally wind speed reaching 40-50 kmph gusting 60 kmph** is likely on 15th & 16th November along & off south Andhra Pradesh coast and 15th to 17th along & off north Andhra Pradesh coast. It would decrease thereafter.
- **Along & off Odisha Coast: Squally wind speed reaching 40-50 kmph gusting 60 kmph** is likely during 15th evening. It is likely to increase gradually becoming **45-55 kmph gusting to 65 kmph** from 16th morning, **50-60 kmph gusting 70 kmph** from 16th evening till 17th evening and decrease thereafter.
- **Along & off West Bengal Coast: Squally wind speed reaching 40-50 kmph gusting 60 kmph** is likely during 16th morning. It is likely to increase gradually becoming **50-60 kmph gusting 70 kmph** from 16th evening till 17th evening and decrease thereafter.
- **Along & off Bangladesh Coast: Squally wind speed reaching 45-55 kmph gusting 65 kmph** is likely from 16th evening till 18th morning and decrease thereafter.

(iii) Sea Condition:

- **Rough to very rough sea condition** is likely over
 - southwest Bay of Bengal along & off Tamil Nadu & Puducherry and Sri Lanka coasts on 15th & 16th November.
 - westcentral and adjoining south Bay of Bengal on 15th & 16th November.
 - North and adjoining westcentral Bay of Bengal on 16th to 18th November.
 - **Along & off south Andhra Pradesh coast** on 15th & 16th November & north Andhra Pradesh coast on 15th to 17th November.
 - **Along & off Odisha coast** during 15th to 18th November.
 - **Along & off West Bengal and Bangladesh coasts** during 16th to 18th November

(iv) Fishermen Warning:

Fishermen are advised not to venture into

- Southeast & adjoining eastcentral Bay of Bengal and Andaman Sea on 15th November.
- Southwest Bay of Bengal on 15th & 16th November
- Westcentral Bay of Bengal during 15th to 17th November
- Northwest Bay of Bengal during 16th to 18th November
- Along & off Andhra Pradesh Coast during 15th to 17th November
- Along & off Odisha coast during 15th to 18th November
- Along & off West Bengal coast during 16th to 18th November
- Along & off Bangladesh coast during 16th to 18th November

The Fishermen out at sea are advised to return to coast.

Contact: Cyclone Warning Division, Office of the Director General of Meteorology,
India Meteorological Department, Ministry of Earth Sciences.

Phone : (91) 11-24652484, FAX: (91) 11-24643128, 24623220, E-mail: cwdhq2008@gmail.com, Website: rsmcnewdelhi.imd.gov.in

Spatial rainfall distribution: Isolated: <25%, A few: 26-50%, Many: 51-75%, Most: 76-100%

Rainfall amount (mm): Heavy rain: 64.5 – 115.5, Very heavy rain: 115.6 – 204.4, Extremely heavy rain: 204.5 or more.

(v) Damage Expected & Action Suggested for coastal areas of Odisha & West Bengal:

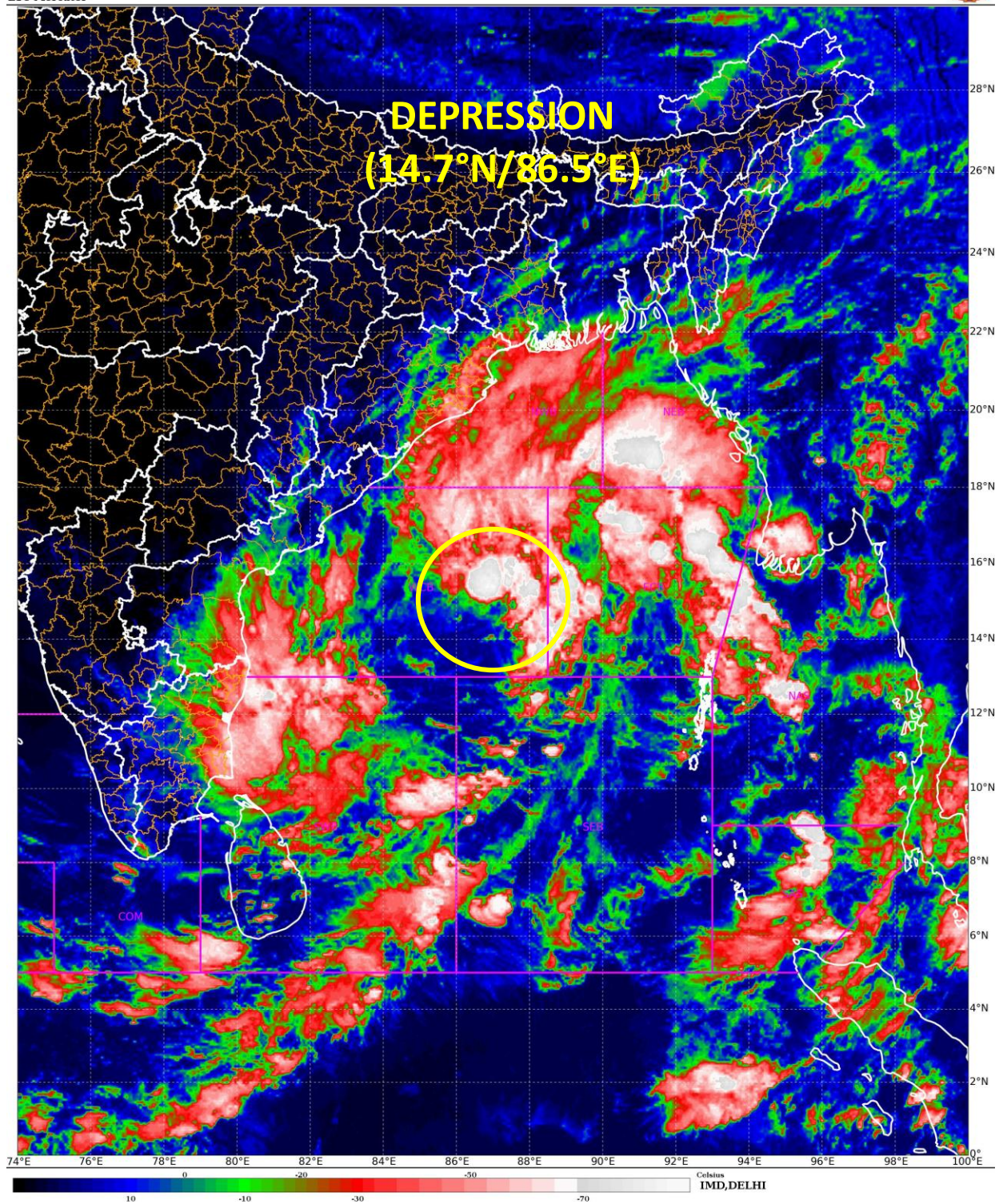
- Minor damage to loose/ unsecured structures.
- Some breaches in Kutcha road due to flooding.
- Minor damage to small trees like Banana. Papaya and Drumstick and ripe paddy crops.
- Partial Damage to standing crops in coastal areas of Odisha & west Bengal.
- Minor damage to Kutcha embankments.

The system is under continuous surveillance and the next Press Release will be issued at 1430 hours IST of 16th November, 2023.

For regular updates kindly visit www.rsmcnewdelhi.imd.gov.in and www.mausam.imd.gov.in

SAT : INSAT-3D IMG
 IMG_TIR1_TEMP 10.8 um
 L1C Mercator

15-11-2023/(0800 to 0827) GMT
 15-11-2023/(1330 to 1357) IST



Contact: Cyclone Warning Division, Office of the Director General of Meteorology,
 India Meteorological Department, Ministry of Earth Sciences.

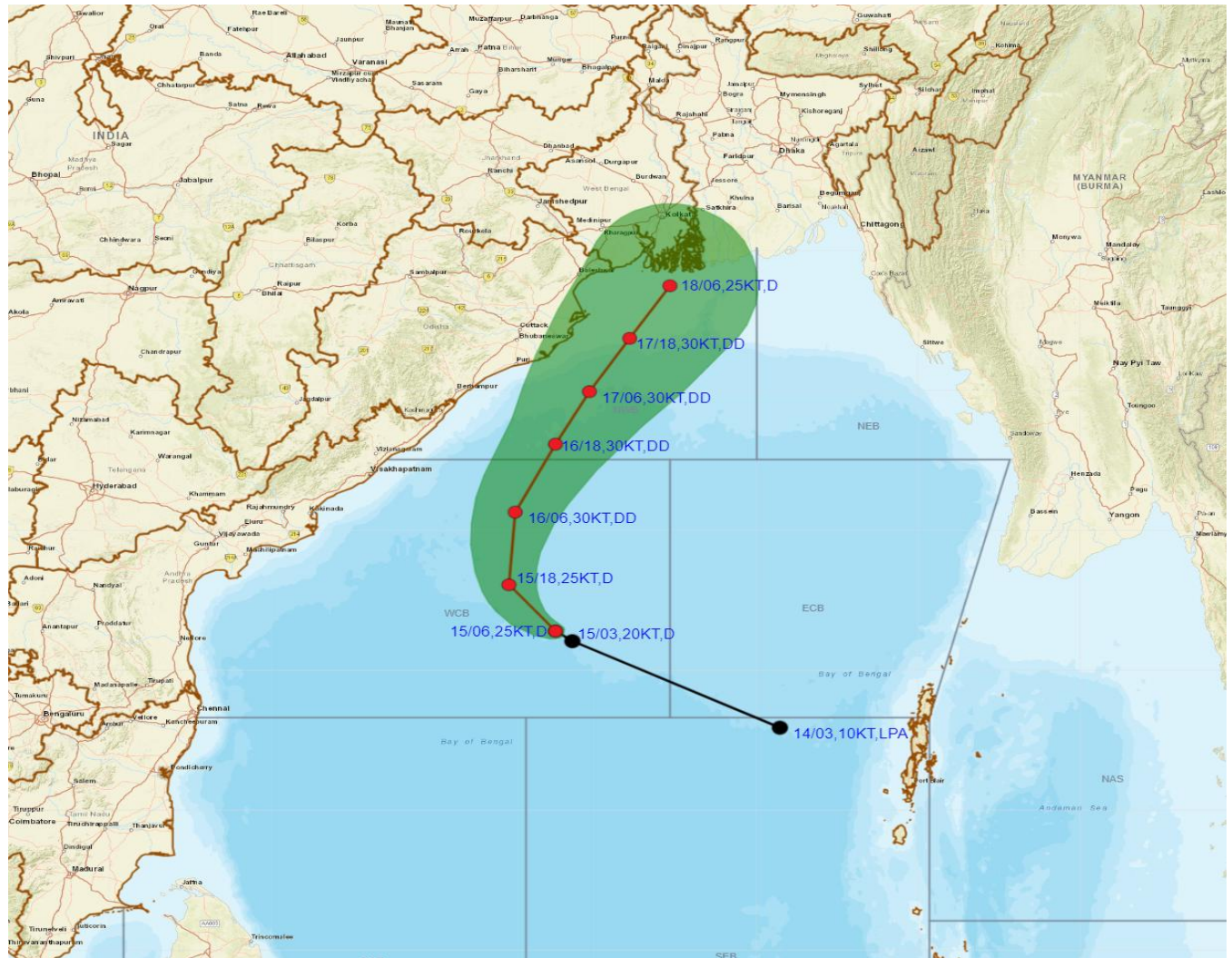
Phone: (91) 11-24652484, FAX: (91) 11-24643128, 24623220, E-mail: cwdhq2008@gmail.com, Website: rsmcnewdelhi.imd.gov.in

Spatial rainfall distribution: Isolated: <25%, A few: 26-50%, Many: 51-75%, Most: 76-100%

Rainfall amount (mm): Heavy rain: 64.5 – 115.5, Very heavy rain: 115.6 – 204.4, Extremely heavy rain: 204.5 or more.



OBSERVED AND FORECAST TRACK AND INTENSITY ALONGWITH CONE OF UNCERTAINTY IN ASSOCIATION WITH DEPRESSION OVER WESTCENTRAL BAY OF BENGAL BASED ON 0600 UTC (1130 IST) OF 15TH NOVEMBER 2023.



DATE/TIME IN UTC
 IST=UTC + 0530
 L: LOW PRESSURE AREA
 WML: WELL MARKED LOW PRESSURE AREA
 D: DEPRESSION (17-27 KT)
 DD: DEEP DEPRESSION (28-33 KT)
 CS: CYCLONIC STORM (34-47 KT)
 SCS: SEVERE CYCLONIC STORM (48-63KT)
 VSCS: VERY SEVERE CYCLONIC STORM (64-89 KT)
 ESCS: EXTREMELY SEVERE CYCLONIC STORM (90-119 KT)
 SuCS: SUPER CYCLONIC STORM (≥ 120 KT)

- LESS THAN 34 KT
- 34-47 KT
- ≥ 48 KT
- OBSERVED TRACK
- FORECAST TRACK
- CONE OF UNCERTAINTY

Forecast	DISTANCE(KM) AND DIRECTION FROM STATIONS		
	PARADIP (CWR)	DIGHA	VISHAKHAPATNAM
16.11.23/0600	370, SSW	540, SSW	280, ESE
16.11.23/1800	220, S	380, SSW	350, ENE
17.11.23/0600	120, SSE	260, S	440, ENE

Contact: Cyclone Warning Division, Office of the Director General of Meteorology,
 India Meteorological Department, Ministry of Earth Sciences.

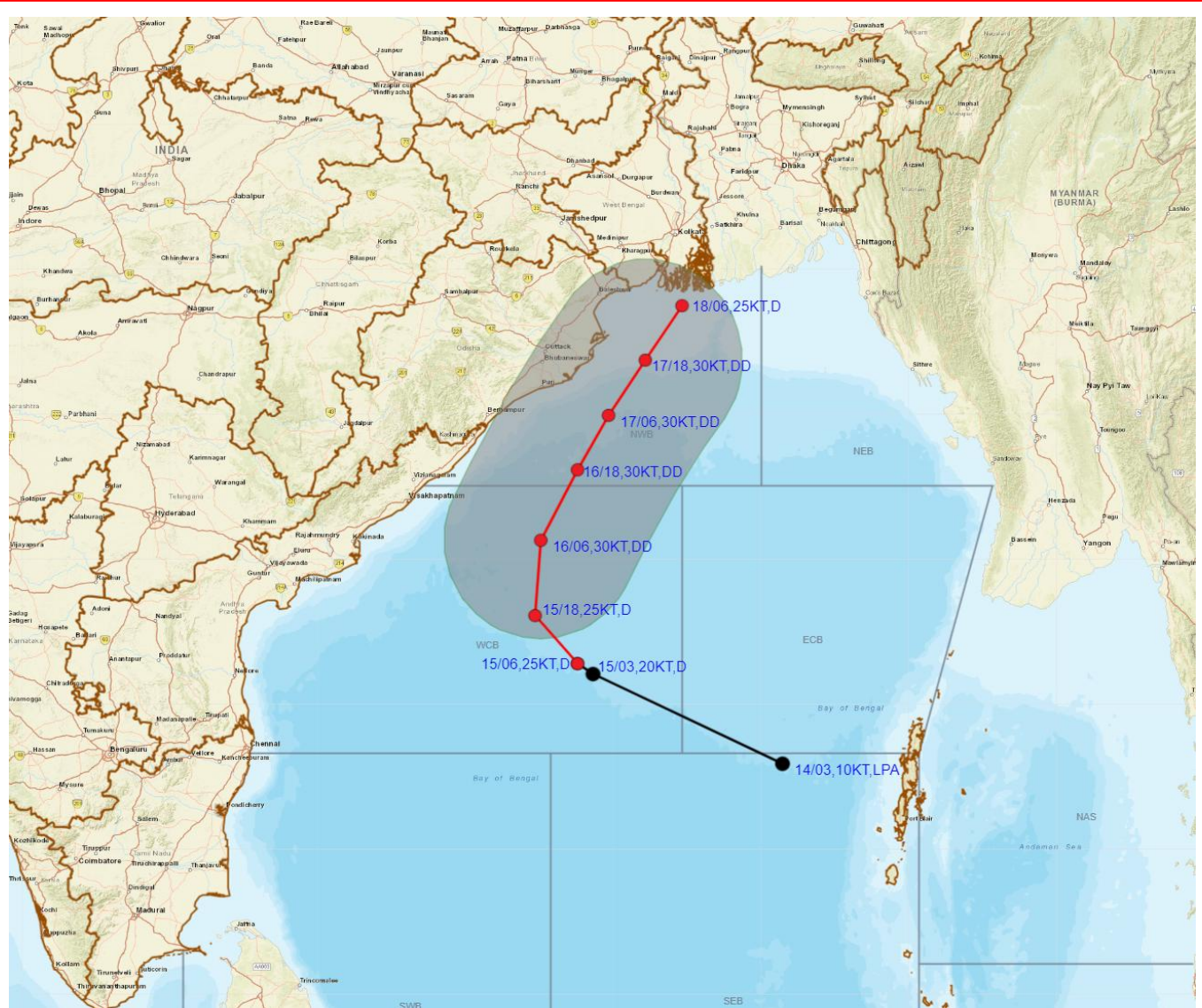
Phone: (91) 11-24652484, FAX: (91) 11-24643128, 24623220, E-mail: cwdhq2008@gmail.com, Website: smcnewdelhi.imd.gov.in

Spatial rainfall distribution: Isolated: <25%, A few: 26-50%, Many: 51-75%, Most: 76-100%

Rainfall amount (mm): Heavy rain: 64.5 – 115.5, Very heavy rain: 115.6 – 204.4, Extremely heavy rain: 204.5 or more.



OBSERVED AND FORECAST TRACK AND INTENSITY ALONG WITH QUADRANT WIND DISTRIBUTION IN ASSOCIATION WITH DEPRESSION OVER WESTCENTRAL BAY OF BENGAL BASED ON 0600 UTC (1130 IST) OF 15TH NOVEMBER 2023.



DATE/TIME IN UTC
IST=UTC + 0530

L: LOW PRESSURE AREA
WML: WELL MARKED LOW PRESSURE AREA
D: DEPRESSION (17-27 KT)
DD: DEEP DEPRESSION (28-33 KT)
CS: CYCLONIC STORM (34-47 KT)
SCS: SEVERE CYCLONIC STORM (48-63KT)
VSCS: VERY SEVERE CYCLONIC STORM (64-89 KT)
ESCS: EXTREMELY SEVERE CYCLONIC STORM (90-119 KT)
SuCS: SUPER CYCLONIC STORM (≥ 120 KT)

● LESS THAN 34 KT
○ 34-47 KT
○ ≥ 48 KT
— OBSERVED TRACK
— FORECAST TRACK
— CONE OF UNCERTAINTY
AREA OF MAXIMUM SUSTAINED WIND SPEED:
■ 28-33 KT (52-61 KMPH)
■ 34-49 KT (62-91 KMPH)
■ 50-63 KT (92-117 KMPH)
■ ≥ 64 KT (≥118 KMPH)

IMPACT OVER THE SEA

MSW (knot/kmph)	Impact	Action
28-33 (52-61)	Very rough seas	Total suspension of fishing operations
34-49 (62-91)	High to very high seas	Total suspension of fishing operations
50-63 (92-117)	Very high seas	Total suspension of fishing operations
≥ 64 (≥118)	Phenomenal	Total suspension of fishing operations

Contact: Cyclone Warning Division, Office of the Director General of Meteorology,
India Meteorological Department, Ministry of Earth Sciences.

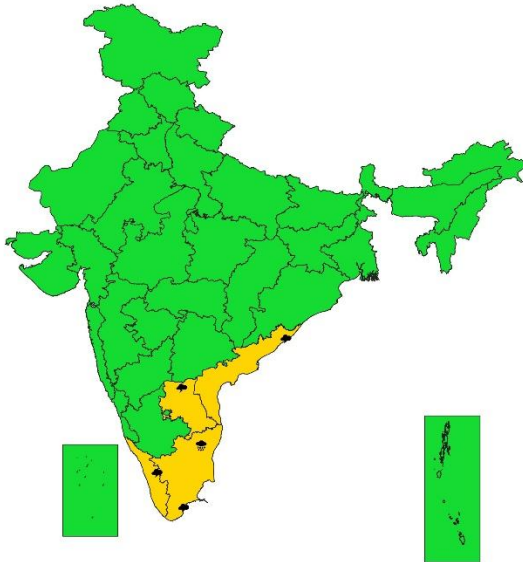
Phone: (91) 11-24652484, FAX: (91) 11-24643128, 24623220, E-mail: cwdhq2008@gmail.com, Website: smcnewdelhi.imd.gov.in

Spatial rainfall distribution: Isolated: <25%, A few: 26-50%, Many: 51-75%, Most: 76-100%

Rainfall amount (mm): Heavy rain: 64.5 – 115.5, Very heavy rain: 115.6 – 204.4, Extremely heavy rain: 204.5 or more.



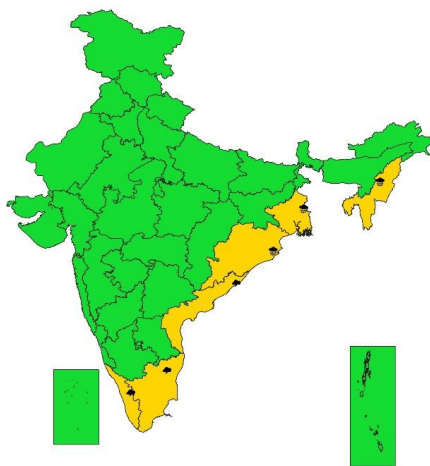
SUBDIVISIONWISE WEATHER WARNING FOR DAY 1
(15-11-2023)



- | | | |
|-----------------------------|------------------------|-------------------------|
| Subdivision Warning | Dust Storm | Subdivision color |
| ☁ Heavy Rain | ☀ Strong Surface Winds | 🟢 NO WARNING |
| ❄ Heavy Snow | 🔥 Heat Wave | 🟡 WATCH(BE UPDATED) |
| ⚡ Thunderstorms & Lightning | ❄ Cold wave | 🟠 ALERT (BE PREPARED) |
| 🌨 Hailstorm | 🌫 Fog | 🔴 WARNING (TAKE ACTION) |



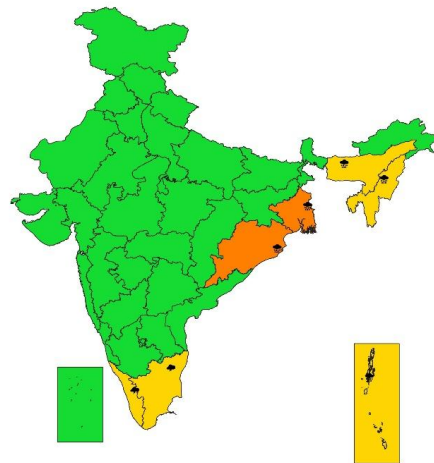
SUBDIVISIONWISE WEATHER WARNING FOR DAY 2
(16-11-2023)



- | | | |
|-----------------------------|------------------------|-------------------------|
| Subdivision Warning | Dust Storm | Subdivision color |
| ☁ Heavy Rain | ☀ Strong Surface Winds | 🟢 NO WARNING |
| ❄ Heavy Snow | 🔥 Heat Wave | 🟡 WATCH(BE UPDATED) |
| ⚡ Thunderstorms & Lightning | ❄ Cold wave | 🟠 ALERT (BE PREPARED) |
| 🌨 Hailstorm | 🌫 Fog | 🔴 WARNING (TAKE ACTION) |



SUBDIVISIONWISE WEATHER WARNING FOR DAY 3
(17-11-2023)



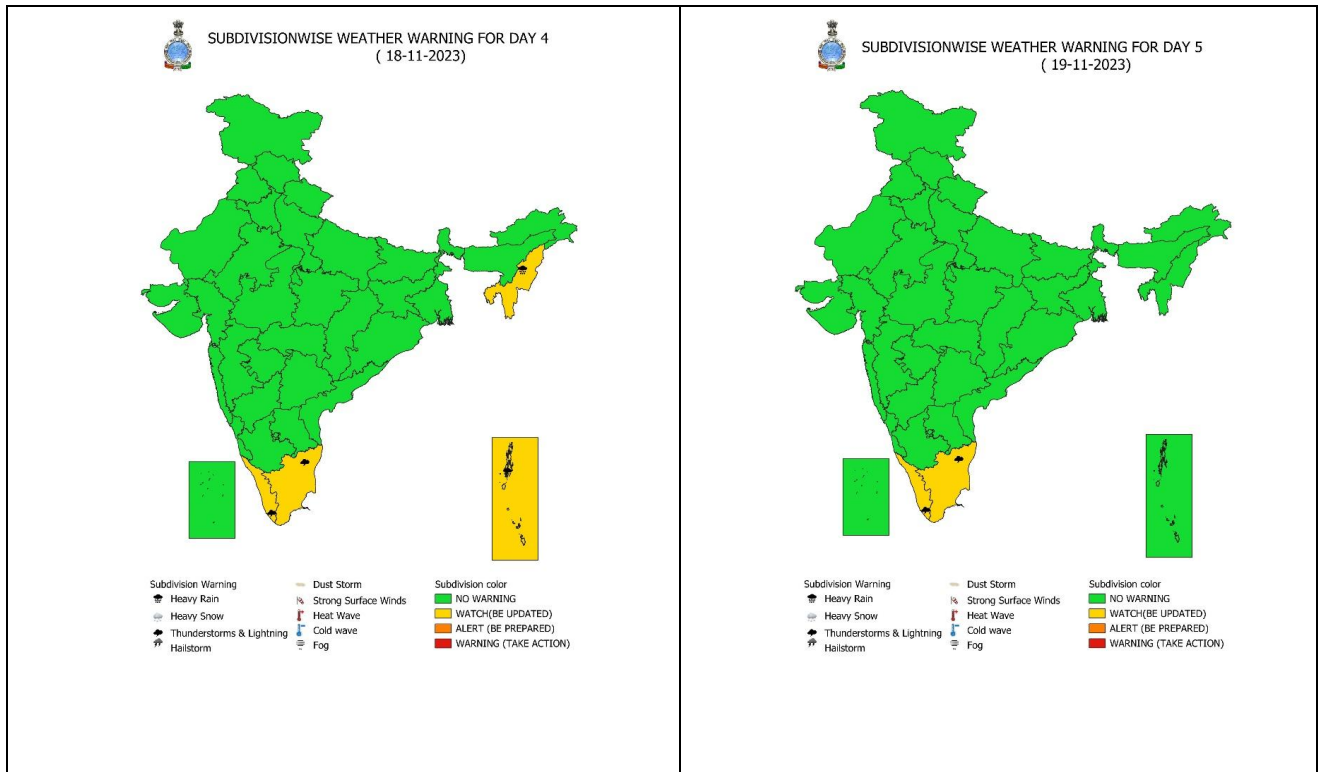
- | | | |
|-----------------------------|------------------------|-------------------------|
| Subdivision Warning | Dust Storm | Subdivision color |
| ☁ Heavy Rain | ☀ Strong Surface Winds | 🟢 NO WARNING |
| ❄ Heavy Snow | 🔥 Heat Wave | 🟡 WATCH(BE UPDATED) |
| ⚡ Thunderstorms & Lightning | ❄ Cold wave | 🟠 ALERT (BE PREPARED) |
| 🌨 Hailstorm | 🌫 Fog | 🔴 WARNING (TAKE ACTION) |

Contact: Cyclone Warning Division, Office of the Director General of Meteorology,
India Meteorological Department, Ministry of Earth Sciences.

Phone : (91) 11-24652484, FAX: (91) 11-24643128, 24623220, E-mail: cwdhq2008@gmail.com, Website: rsmcnewdelhi.imd.gov.in

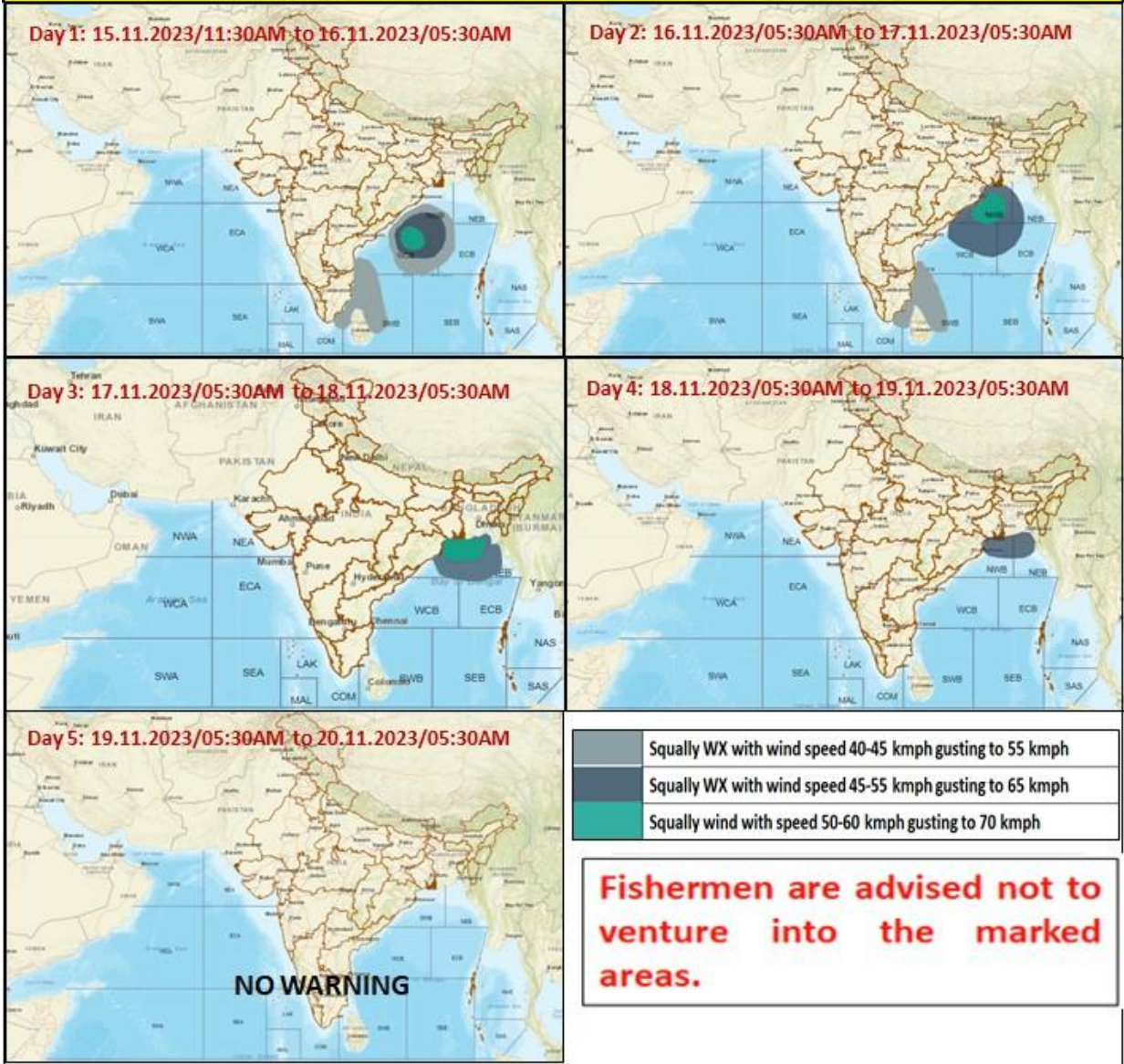
Spatial rainfall distribution: Isolated: <25%, A few: 26-50%, Many: 51-75%, Most: 76-100%

Rainfall amount (mm): Heavy rain: 64.5 – 115.5, Very heavy rain: 115.6 – 204.4, Extremely heavy rain: 204.5 or more.



Contact: Cyclone Warning Division, Office of the Director General of Meteorology,
 India Meteorological Department, Ministry of Earth Sciences.
 Phone : (91) 11-24652484, FAX: (91) 11-24643128, 24623220, E-mail: cwdhq2008@gmail.com, Website: rsmcnewdelhi.imd.gov.in
 Spatial rainfall distribution: Isolated: <25%, A few: 26-50%, Many: 51-75%, Most: 76-100%
 Rainfall amount (mm): Heavy rain: 64.5 – 115.5, Very heavy rain: 115.6 – 204.4, Extremely heavy rain: 204.5 or more.

Fishermen warning graphics



Contact: Cyclone Warning Division, Office of the Director General of Meteorology,
India Meteorological Department, Ministry of Earth Sciences.

Phone : (91) 11-24652484, FAX: (91) 11-24643128, 24623220, E-mail: cwdhq2008@gmail.com, Website: rsmcnewdelhi.imd.gov.in

Spatial rainfall distribution: Isolated: <25%, A few: 26-50%, Many: 51-75%, Most: 76-100%

Rainfall amount (mm): Heavy rain: 64.5 – 115.5, Very heavy rain: 115.6 – 204.4, Extremely heavy rain: 204.5 or more.